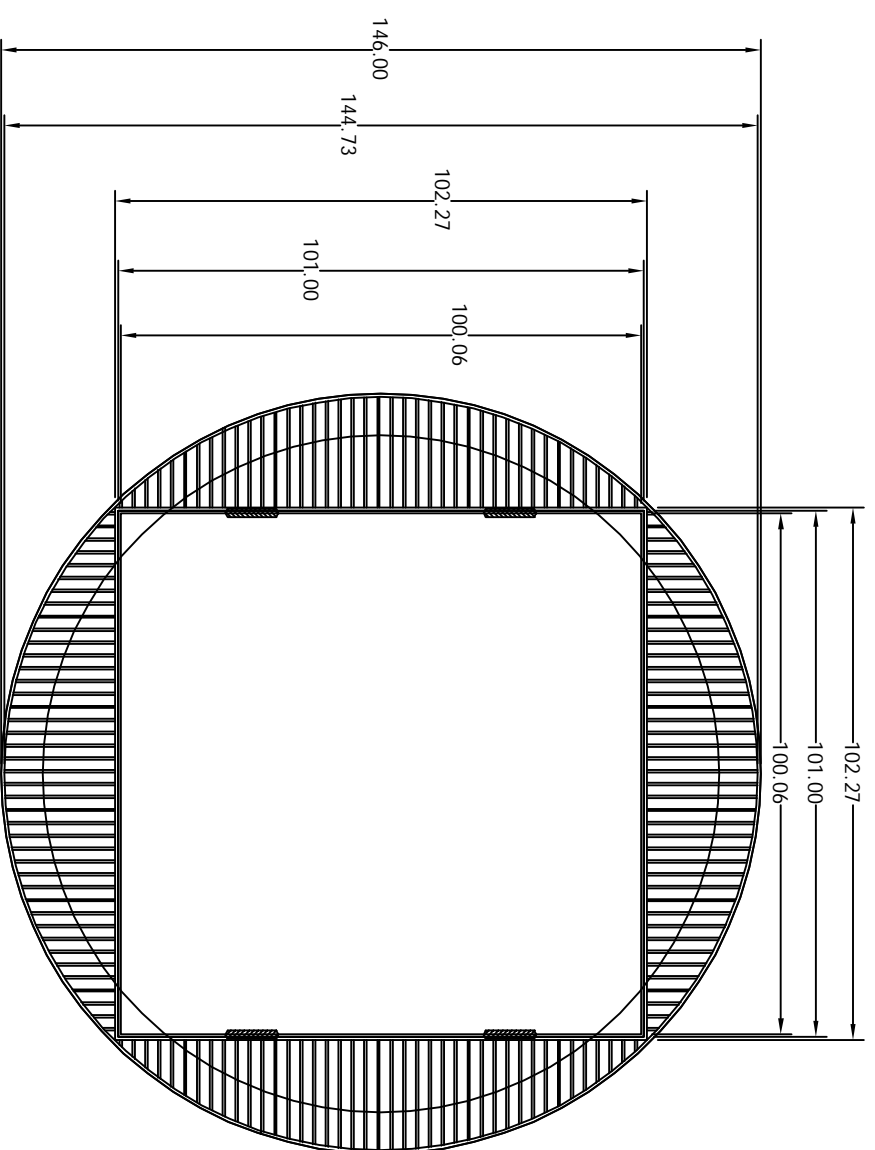
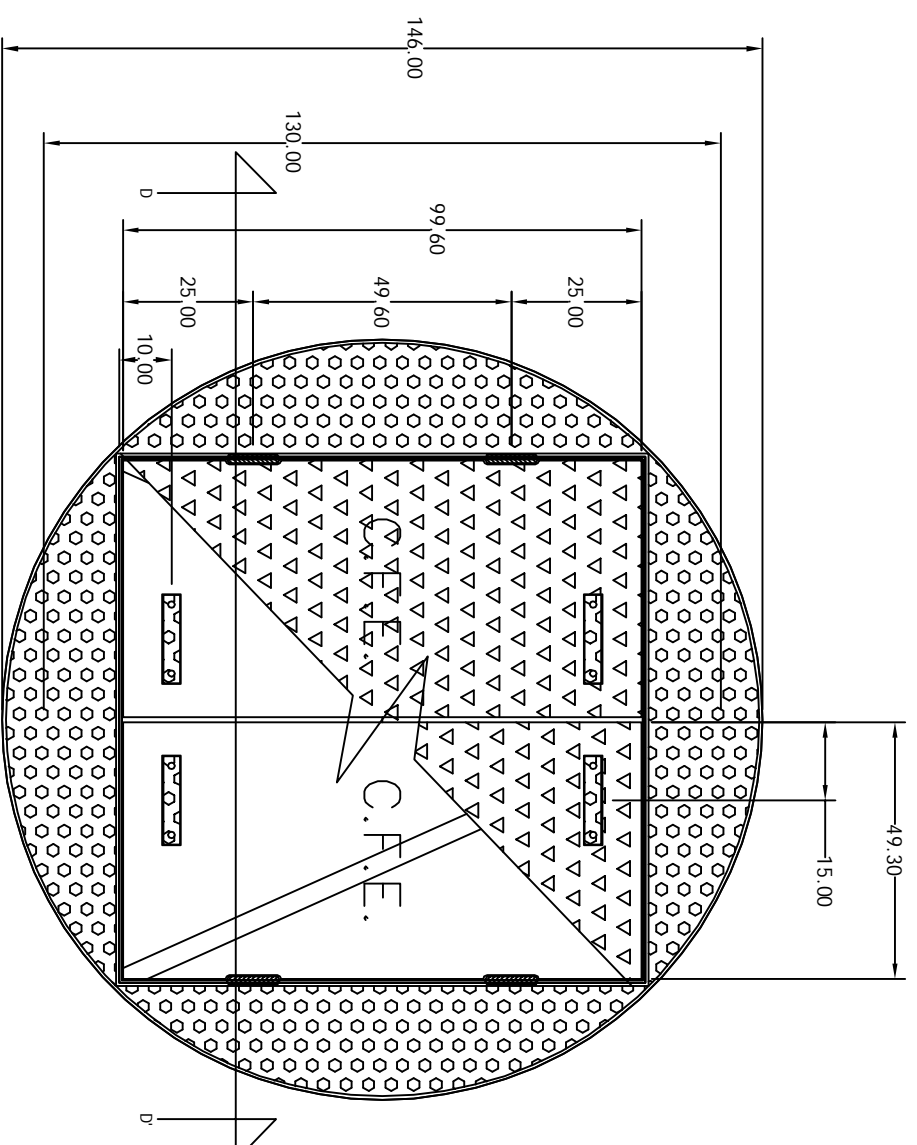


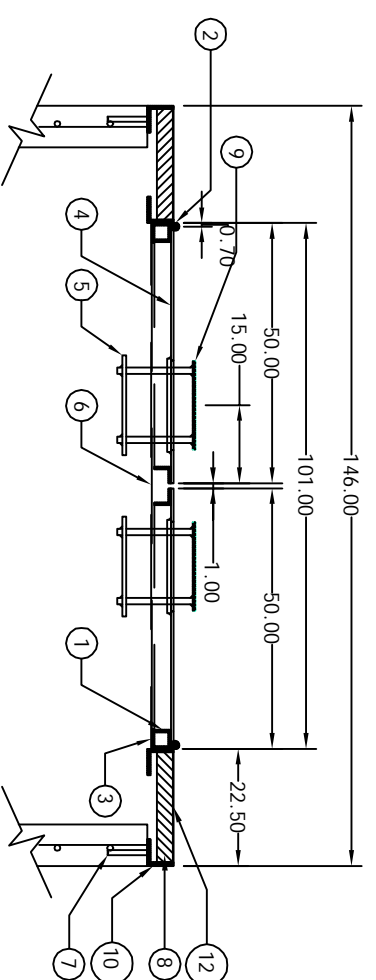
Bóveda Redonda Sumergible 146x200



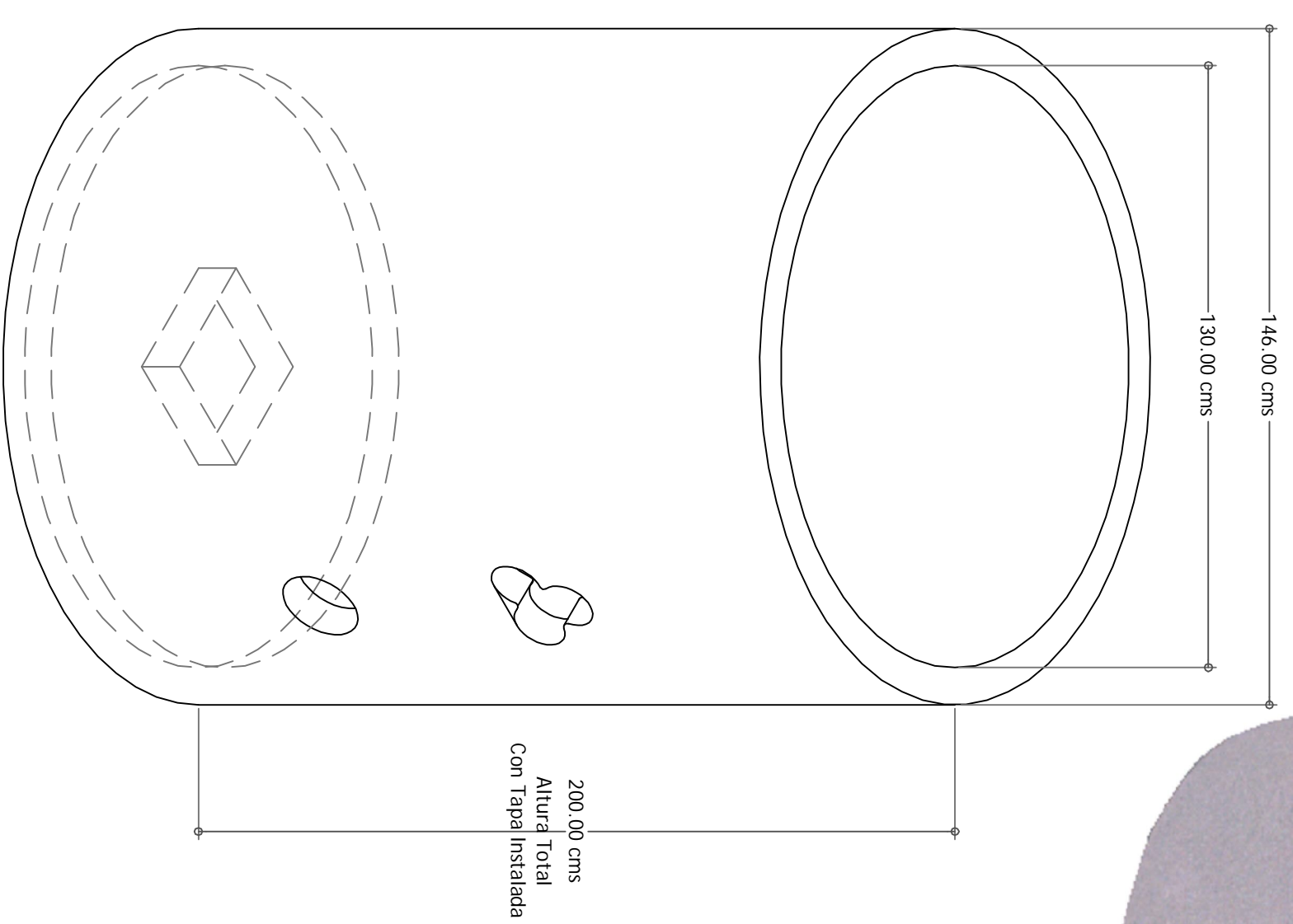
PLANTA
MARCO, REFUERZOS Y REJILLA



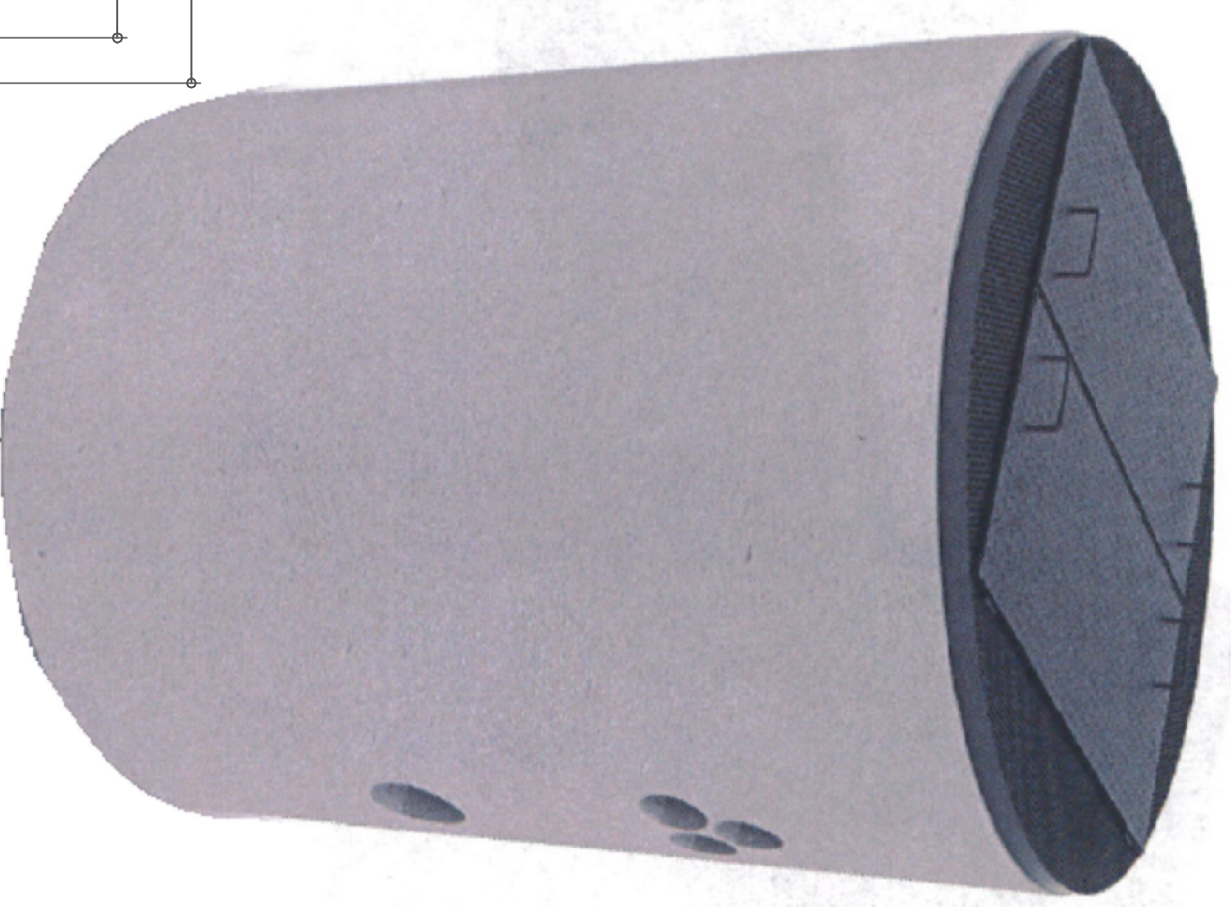
PLANTA TAPA



CORTE TAPA D-D'



200.00 cms
Altura Total
Con Tapa Instalada



CFE-BTMS13BR

BÓVEDA PARA TRANSFORMADOR MONOFÁSICO
SUMERGIBLE DE 12 A 23 KV REDONDO EN BANQUETA

